

PV-SET 5ST/600DC


Order No.: 2920780

<http://eshop.phoenixcontact.de/phoenix/treeViewClick.do?UID=2920780>

Surge protection, generator disconnect and modular terminal blocks in an IP65 housing, pluggable varistors with thermal disconnect between L+, L- and Ground/PE for an inverter with up to five photovoltaic strings.



Commercial data

GTIN (EAN)	 4 046356 286671
sales group	J062
Pack	1 pcs.
Customs tariff	85363010
Catalog page information	Page 59 (TT-2009)

Product notes

WEEE/RoHS-compliant since:
01/29/2007



<http://www.download.phoenixcontact.com>
Please note that the data given here has been taken from the online catalog. For comprehensive information and data, please refer to the user documentation. The General Terms and Conditions of Use apply to Internet downloads.

Technical data

Standards

Housing material	Polycarbonate fiber reinforced
Inflammability class acc. to UL 94	V2
Color	Light gray RAL 7035

Standards for air and creepage distances	DIN VDE 0110-1
	IEC 60664-1: 1992-10
	DIN EN 61643-11
Surge voltage category	III
Pollution degree	2
Degree of protection	IP65
Mounting type	Surface/Wall mounting
Design	Installation housing
Ambient temperature (operation)	-25 °C ... 60 °C
Message: Surge protection fault	Optical
Direction of action	(L+)-PE & (L-)-PE & (L+)-(L-)
Width	300.00 mm
Height	142.00 mm
Length	300.00 mm

Protective circuit

IEC category	II
EN type	T2
Nominal voltage U_N	600 V DC (Non-load voltage U_{OC})
Arrester rated voltage U_C	600 V DC
Nominal load current I_L	≤ 30 A
Ground conductor current I_{PE}	≤ 100 μ A
Standby power consumption P_C	≤ 60 mW
Max. discharge surge current I_{max} (8/20) μ s	40 kA
Nominal discharge surge current I_n (8/20) μ s	20 kA
Protection level U_p	≤ 3 kV (at I_n)
Residual voltage	≤ 2.2 kV (at 5 kA)
Residual voltage (N-PE)	≤ 2.2 kV (with 5 kA (8/20 μ s))
Response time	≤ 25 ns
Max. required backup fuse with branch wiring	(None up to 600 V/30 A)

Connection, protective circuit

Type of connection	Screw terminal blocks
Connection type IN	UT 6
Connection type OUT	UT 6
Connection method	Screw connection

Conductor cross section stranded min.	0.2 mm ²
Conductor cross section stranded max.	10 mm ²
Conductor cross section solid min.	0.2 mm ²
Conductor cross section solid max.	16 mm ²

Standards

Standard - Electrical safety	IEC 61643-1 2005
	EN 61643-11/A11 2007
	IEC 60364-7-712 2002
	EN 60439-1 2005

Certificates / Approvals

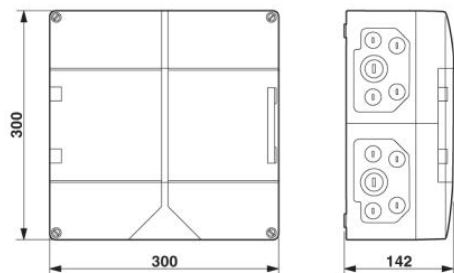


Certification

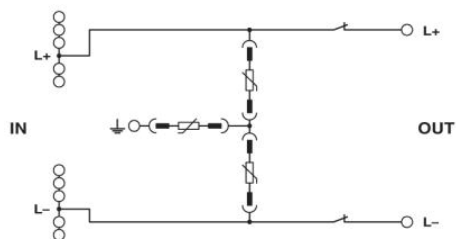
GOST

Diagrams/Drawings

Dimensioned drawing



Circuit diagram



Address

PHOENIX CONTACT Deutschland GmbH
Flachmarktstr. 8
32825 Blomberg, Germany
Phone +49 5235 3 12000
Fax +49 5235 3 41200
<http://www.phoenixcontact.de>



© 2010 Phoenix Contact
Technical modifications reserved;