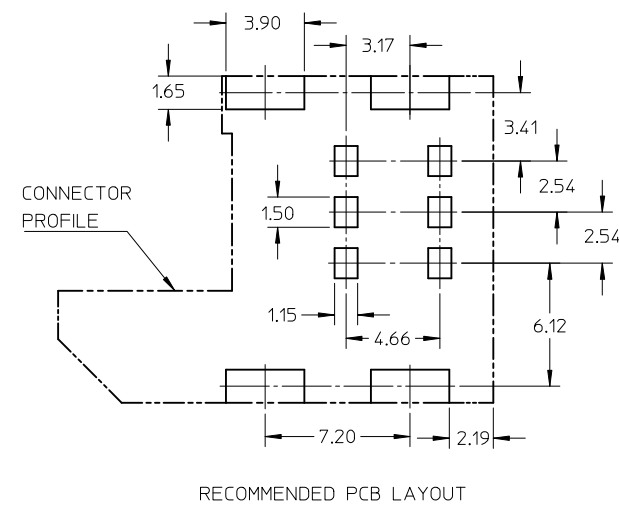
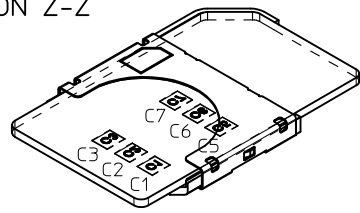


SECTION Z-Z



NOTE:

- 1.MATERIAL:
HOUSING:LCP,45% GLASS-FILLED,UL 94V-0,COLOR IS BLACK.
TERMINAL:BeCu C17200(290) TM06,THICKNESS IS 0.12mm.
SHELL:STAINLESS STEEL,THICKNESS IS 0.15mm.
- 2.FINISH:
TERMINAL:
CONTACT AREA:SELECTIVE 0.75 TO 1.25 MICRON GOLD .
SOLDER TAIL:0.05 TO 0.125 MICRON GOLD FLASH.
UNDERPLATING ALL OVER 1.25 TO 3.75 MICRON NICKEL.
GUIDE RAIL:
SELECTIVE 0.05 TO 0.125 MICRON GOLD FLASH OVER
1.25 TO 3.75 MICRON NICKEL ON SOLDER TAIL AREA.
- 3.COPLANARITY:0.1MM MAX. AMONG THESE TERMINAL SOLDER TAILS.
- 4.PRODUCT SPECIFICATION:PS-47468-001.
- △,DATE CODE(4 DIGITS)

***	***	***	***	EXAMPLE
				2006/01/15 → 6015
				2006/02/10 → 6041
				2007/03/10 → 7069
- 6.THE PART 474680001 COMPLIANT TO RoHS DIRECTIVE 2002/95/EC AND ELV 2000/53/EC.

ADD VIEW EC NO: S2011-1013 DRW:KHLIM CHK:DFCS00 APPR:SKTOH REV: B1	DESCRIPTION 2011/06/01 2011/06/13 2011/07/07	QUALITY SYMBOLS $F_A=0$ $F_C=0$ $F_P=0$	GENERAL TOLERANCES (UNLESS SPECIFIED)		DIMENSION STYLE	SCALE	DESIGN UNITS	THIRD ANGLE PROJECTION				
					MM ONLY		NTS	METRIC				
					mm	INCH	DRAWN BY	DATE	LOW PROFILE 2.0 SIM CONN WITH GUIDE RAIL MOLEX INCORPORATED			
					4 PLACES ± --- ± ---	3 PLACES ± --- ± ---	BWAN	2006/04/26				
		2 PLACES ± 0.13 ± ---	1 PLACE ± --- ± ---	XIXU	2006/04/26	MATERIAL NO. 47468-0001 DOCUMENT NO. SD-47468-001 SHEET NO. 1 OF 1						
		ANGULAR ± 1 °		JNCHEN	2006/04/26							
DRAFT WHERE APPLICABLE MUST REMAIN WITHIN DIMENSIONS			SIZE A3		THIS DRAWING CONTAINS INFORMATION THAT IS PROPRIETARY TO MOLEX INCORPORATED AND SHOULD NOT BE USED WITHOUT WRITTEN PERMISSION							