

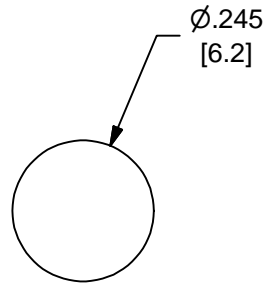
MAGNETIC

Material: Alnico 5, Sintered or Cast, Anisotropic  
 Bhmax (MGOe) or (kJ/m<sup>3</sup>): 3.5-5.5 or 31.0-43.8  
 Br (kG) or (mT): 10.9-12.8 or 1090-1280  
 Hc (Oe) or (kA/m): 620-640 or 49-51  
 Number of Poles: 2  
 Saturation Level: Full  
 Gauss Level: 350 Gauss MIN. .077" from closed end

PHYSICAL

Capsule: Black UL94V-0 Polyester  
 Encapsulant: Black Epoxy  
 Magnet: Hamlin 420

IDENTIFICATION



4 DIGIT DATE CODE →

Dimensions are in Inches [mm]  
 Tolerances unless otherwise noted:  
 .X: ± .1 , .XX: ± .01 , .XXX: ± .005 , Angular: ± 1/2°  
 \* Denotes Critical Dimensions

ORIGINAL DCR NO. 2038	
DRAWN BY: BB	DATE: 25-Apr-89
APP'D BY: BB	DATE: 5-May-89

<b>HAMLIN</b>	PROPRIETARY NOTE: THE INFORMATION ON THIS DRAWING IS THE CONFIDENTIAL PROPERTY OF HAMLIN. THIS DRAWING MUST NOT BE MADE PUBLIC OR COPIED UNLESS AUTHORIZED IN WRITING BY HAMLIN. THIS DRAWING IS SUBJECT TO RETURN UPON DEMAND.	
	DESCRIPTION OF REVISION: UPDTE -2 SHEET	

SHEET: 1 of 1	DCR NO. L3631	REV. AH
DRAWN BY: KCL	DATE: 27-Aug-08	
APP'D BY: MCP	DATE: 17-Sep-08	